



RICHMOND HIGHWAY CORRIDOR IMPROVEMENTS

SATURDAY, JANUARY 16, 2021

Dan Reinhard, PE, VDOT, Design Project Manager

| UPC 107187



Project Overview

- **Widening of Richmond Highway (US Route 1) from four lanes to six lanes**
 - Jeff Todd Way to Sherwood Hall Ln
 - Approximately 3.1 miles
- **Safety improvements**
- **Congestion relief**
- **Intersection improvements**
- **Median reservation for future Fairfax County Bus Rapid Transit (BRT)**
- **Sidewalks and separate bicycle paths on both sides of road**
- **Three bridge replacements**
- **Potential noise walls**
- **Utility relocations**
- **Stormwater management**





Environmental Assessment (EA)

A NEPA public hearing was held Oct. 29, 2018 and the comment period closed Dec. 6, 2018.

EA Document is available on the website.

Federal Highway Administration (FHWA) issued a Finding of No Significant Impact (FONSI) on October 19, 2020

1 RICHMOND HIGHWAY CORRIDOR IMPROVEMENTS
www.virginia.gov/richmondhighway

Richmond Highway (Route 1) Corridor Improvements
Project Between Jeff Todd Way and Napper Road
Fairfax County, Virginia

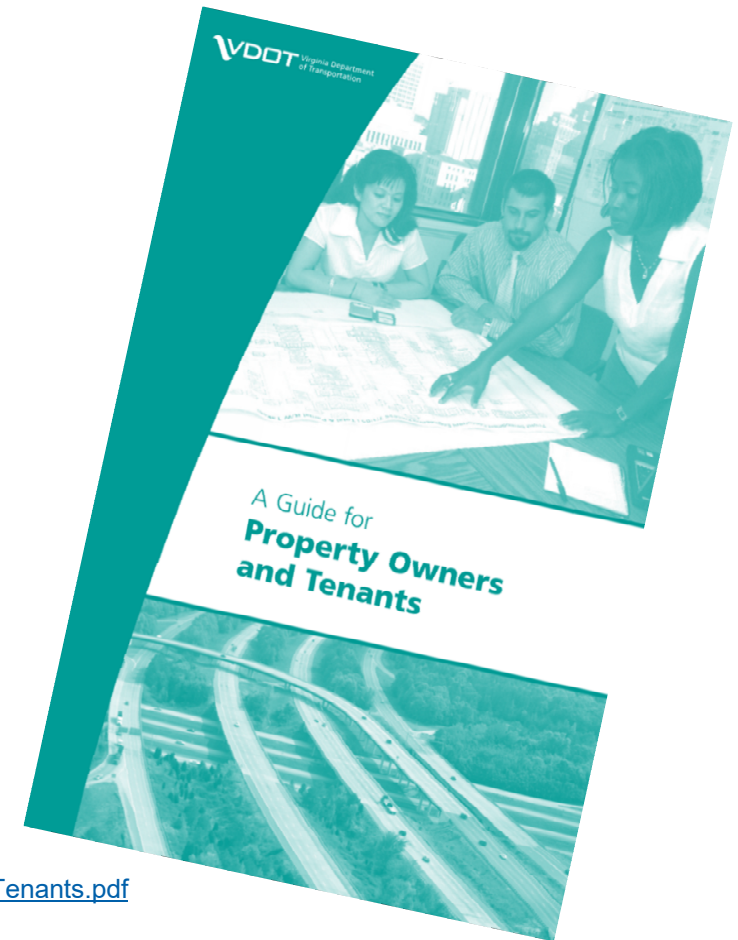
ENVIRONMENTAL ASSESSMENT
September 2018

VDOT
Virginia Department of Transportation

VDOT Project #: 0001-029-205, C501, P101, R201
UPC#: 107187

Right-of-Way Acquisition

- Each property impact is unique
- Begin right-of-way acquisitions for entire properties in early 2020
- Acquisition of right-of-way for partial property acquisitions in phase 1 scheduled to begin in mid to late 2021
- Meetings will be held with owners and tenants

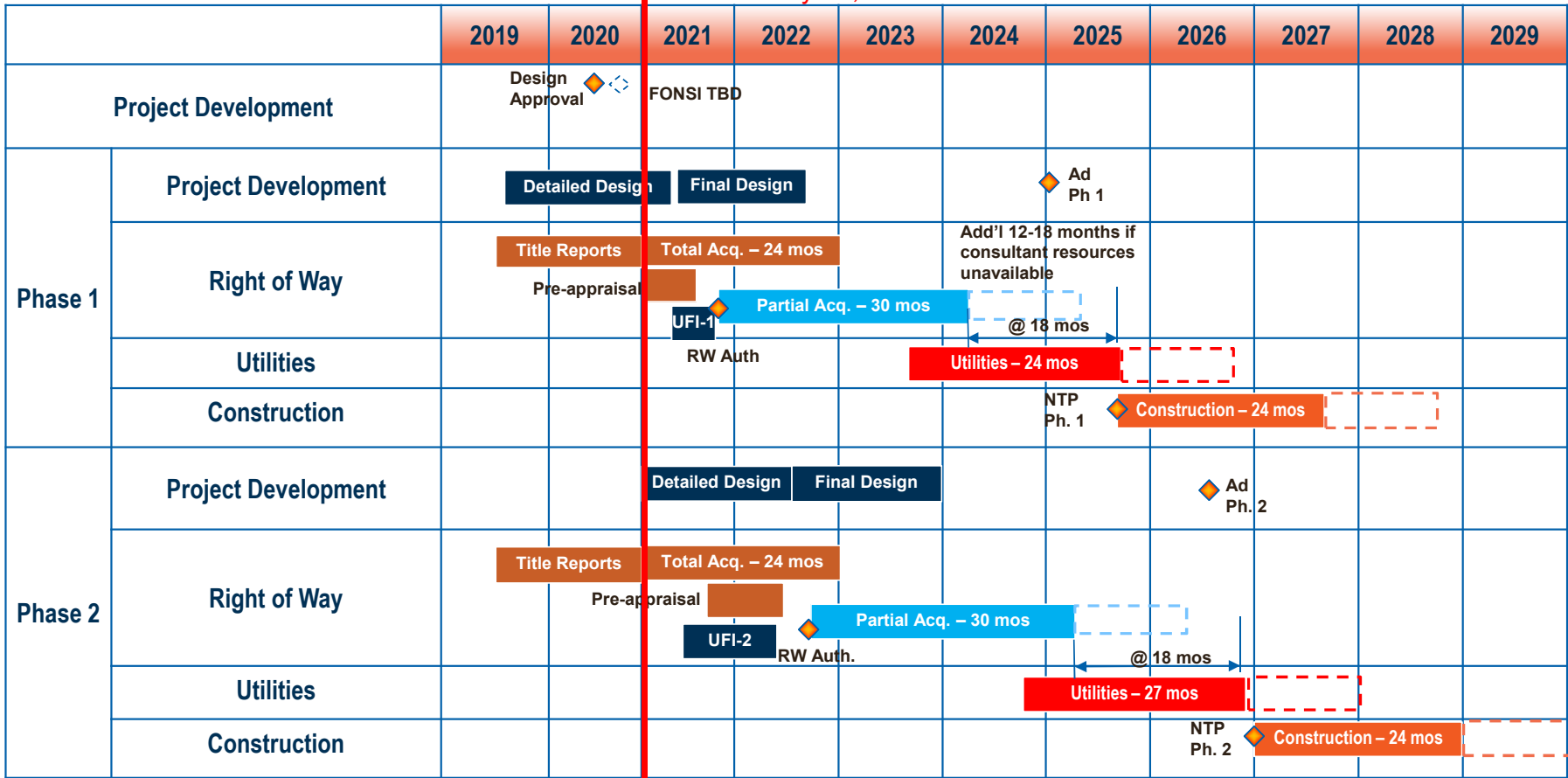


https://www.virginiadot.org/business/resources/Right_of_way/A_Guide_for_Property_Owners_and_Tenants.pdf
http://www.virginiadot.org/info/resources/prop_owners_Spanish.pdf



Richmond Highway - 2 Phase Schedule

We are here
January 16, 2021



Richmond Highway Corridor Improvements Estimate

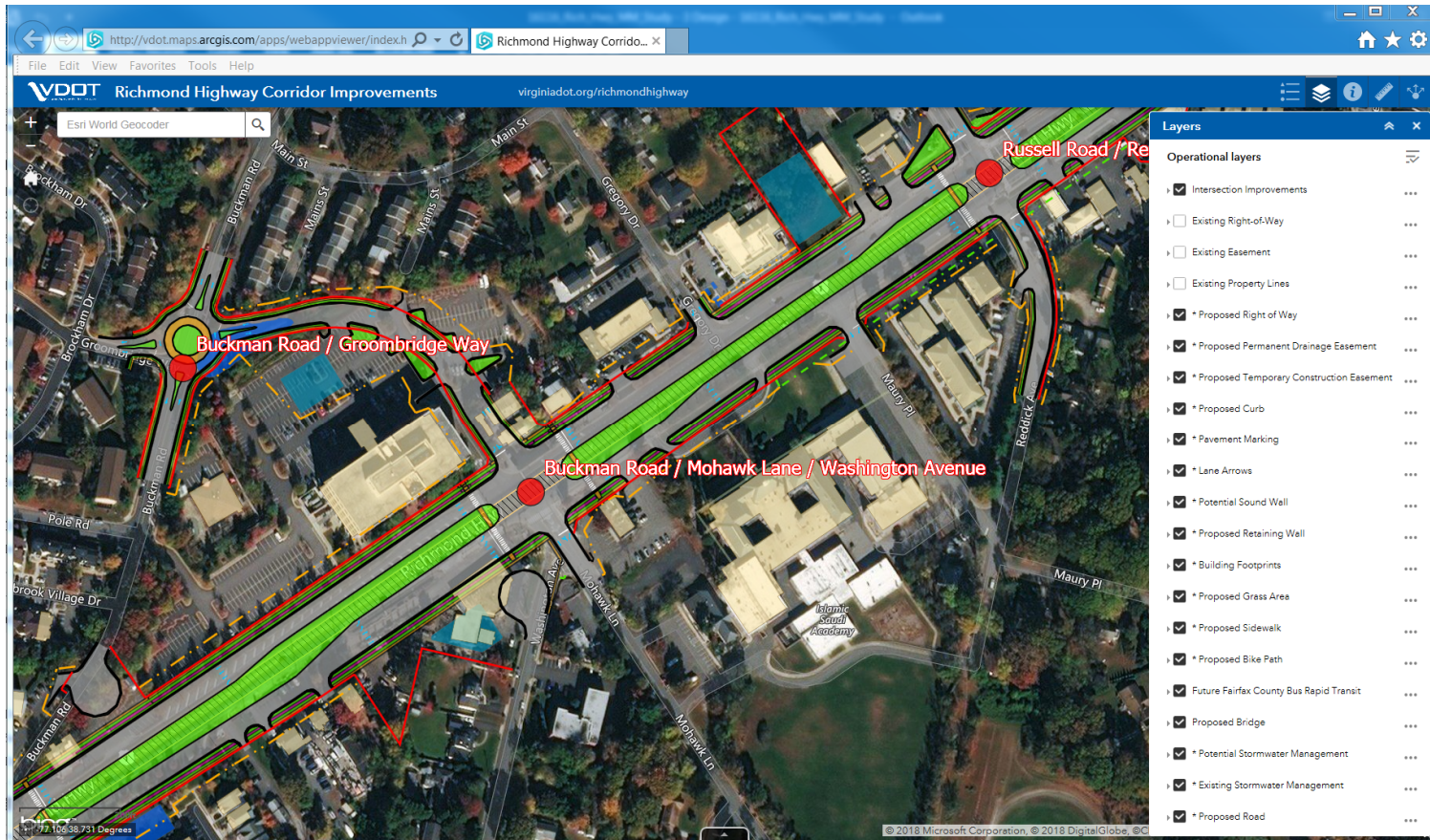
Cost Estimate* (\$ in Millions)	Programmed Funding	Proposed Sources	Funding Sources**
PE \$ 19.2	\$ 1.0		NVTA 70% (FY15/16)
RW/UT \$ 179.5	\$ 79.1		RSTP (Federal)
	\$ 10.0		Revenue Sharing
CN \$ 216.3	\$ 3.7		Local Funds (C&I)
Total \$ 415.0	\$ 127.0		NVTA 70% (FY18/23)
	\$ 120.4		NVTA 70% (FY20/25)
		\$ 73.8	SMART SCALE and/or Additional Sources: NVTA 70%, BUILD, RSTP, Federal Grants, Developer Contrib., Local, and Other
	\$ 341.2	\$ 73.8	\$ 415.0

*Cost estimates subject to refinement as project develops.

**Project is jointly funded with \$248.4 million from the Northern Virginia Transportation Authority (NVTA).

Interactive Project Map

Available on the project webpage www.virginiadot.org/Richmondhighway



For more information visit:

<http://www.virginiadot.org/richmondhighway>

