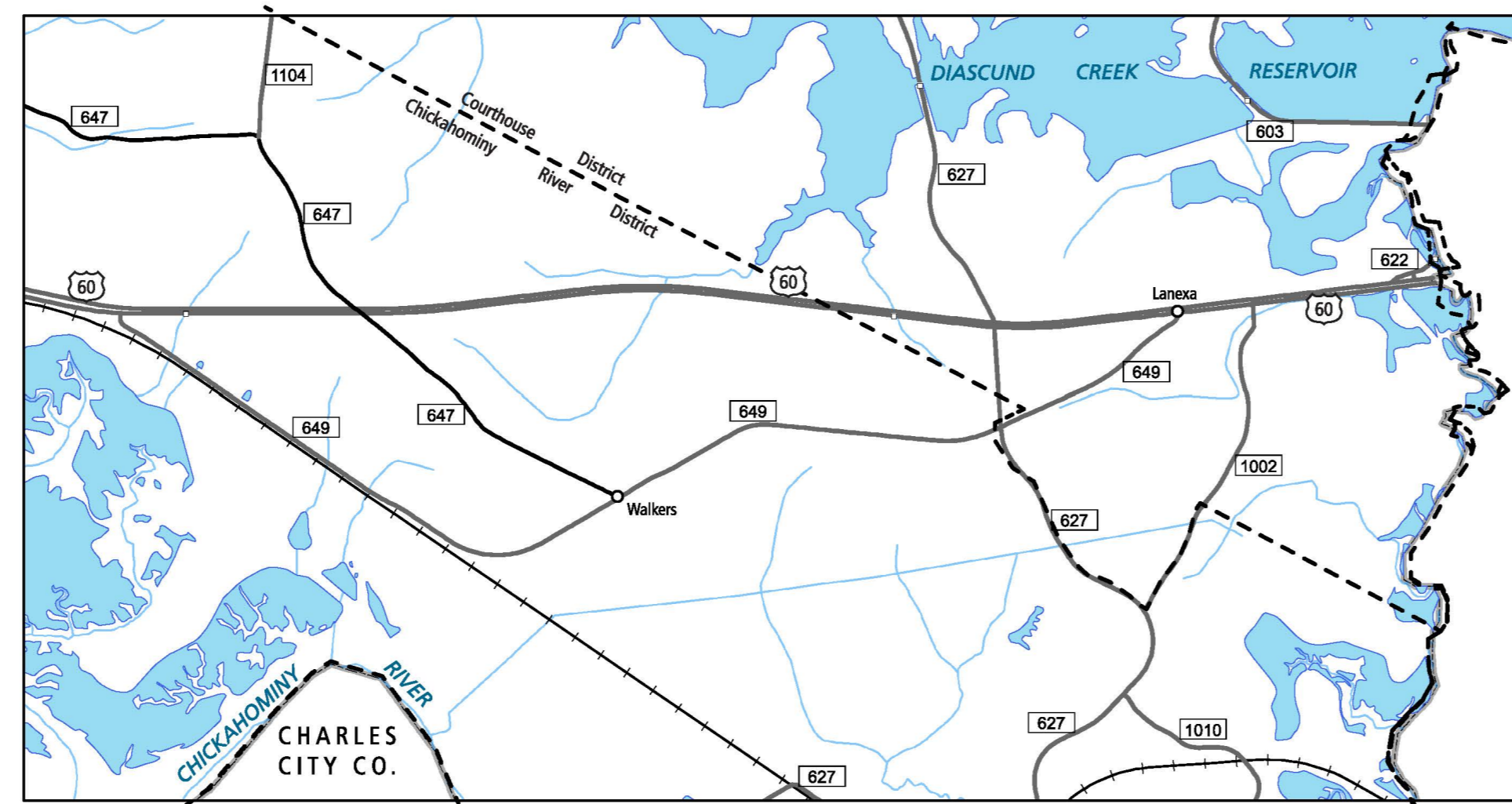
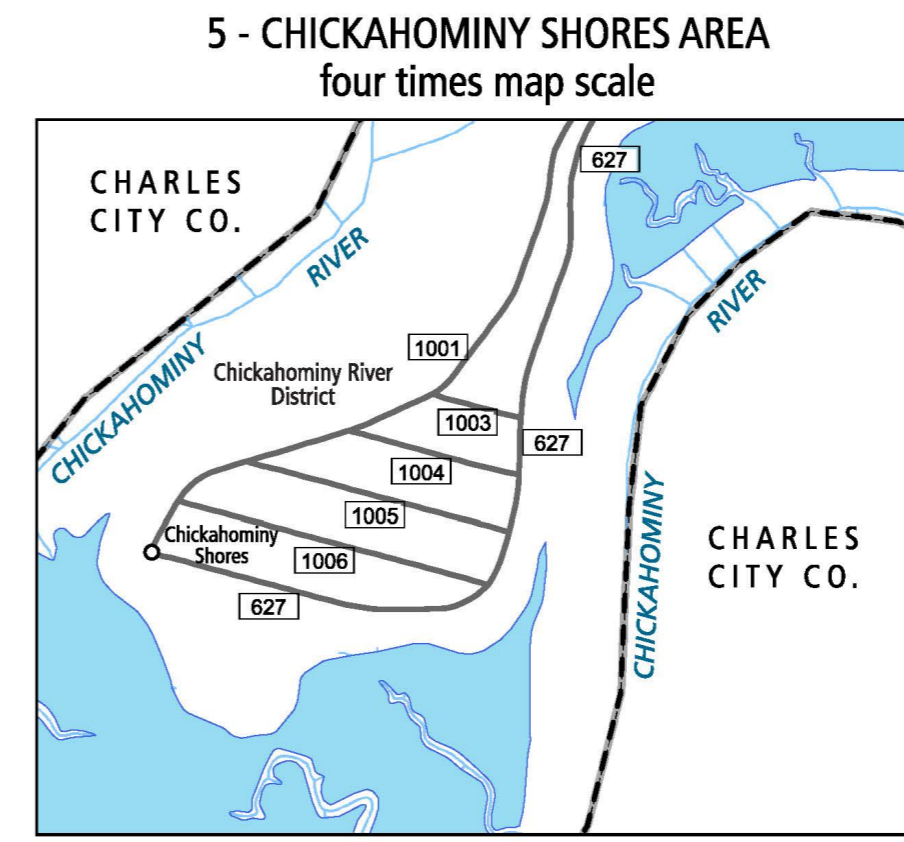


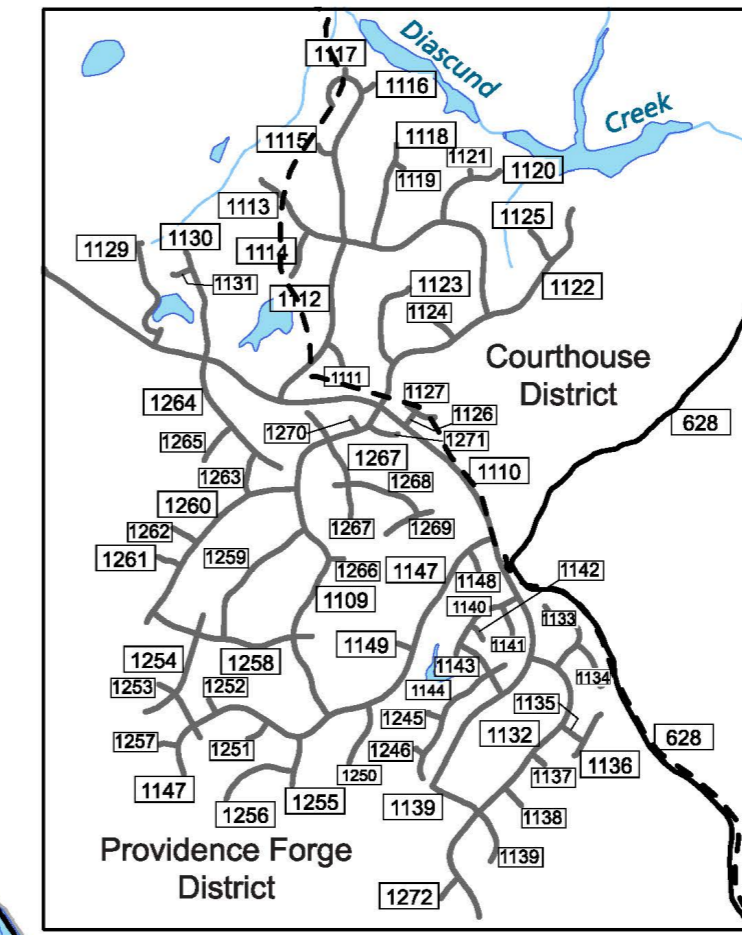
1
BOTTOMS BRIDGE AREA
four times map scale



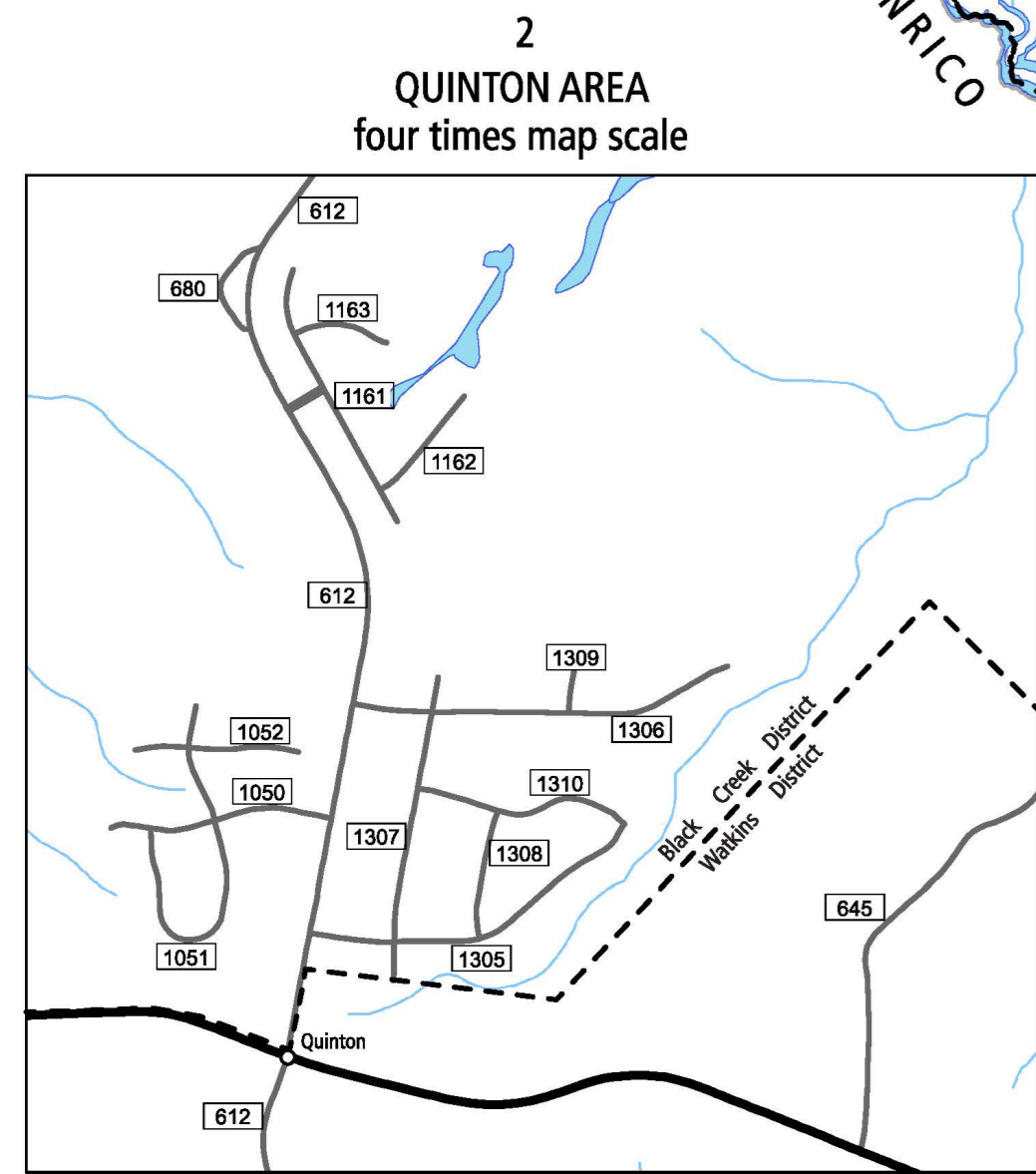
4
LANEXA AND WALKERS AREA
four times map scale



5 - CHICKAHOMINY SHORES AREA
four times map scale



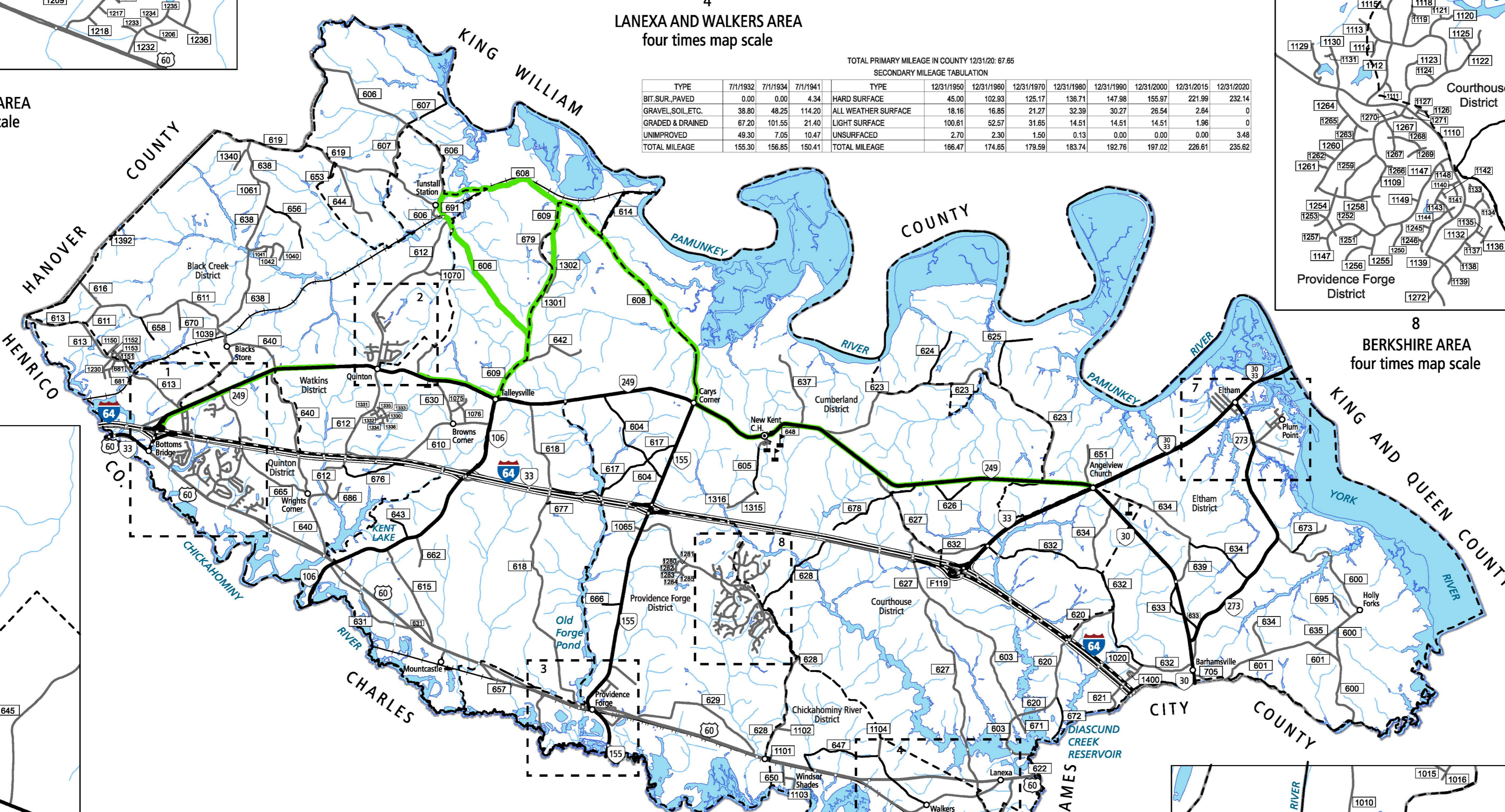
8
BERKSHIRE AREA
four times map scale



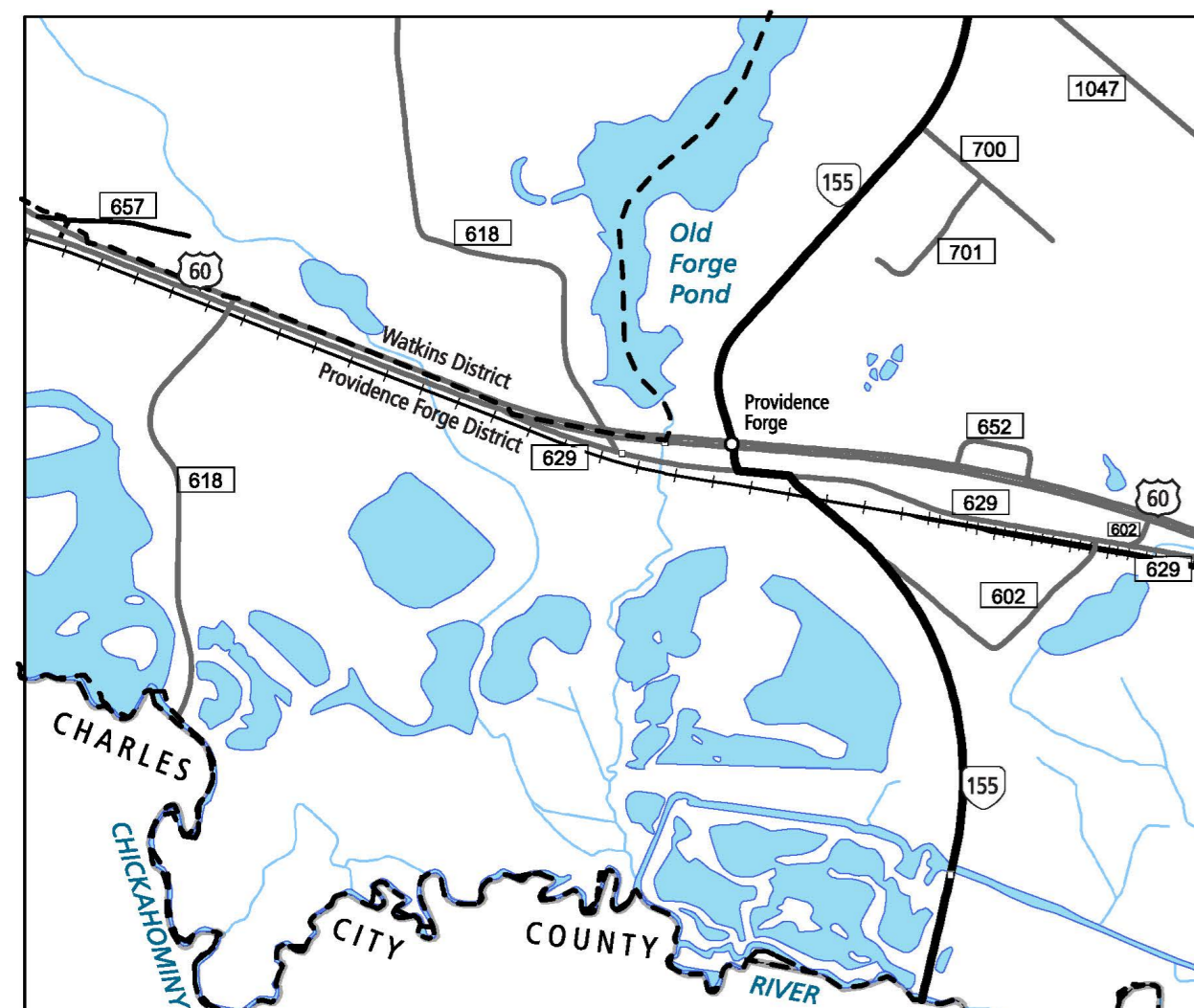
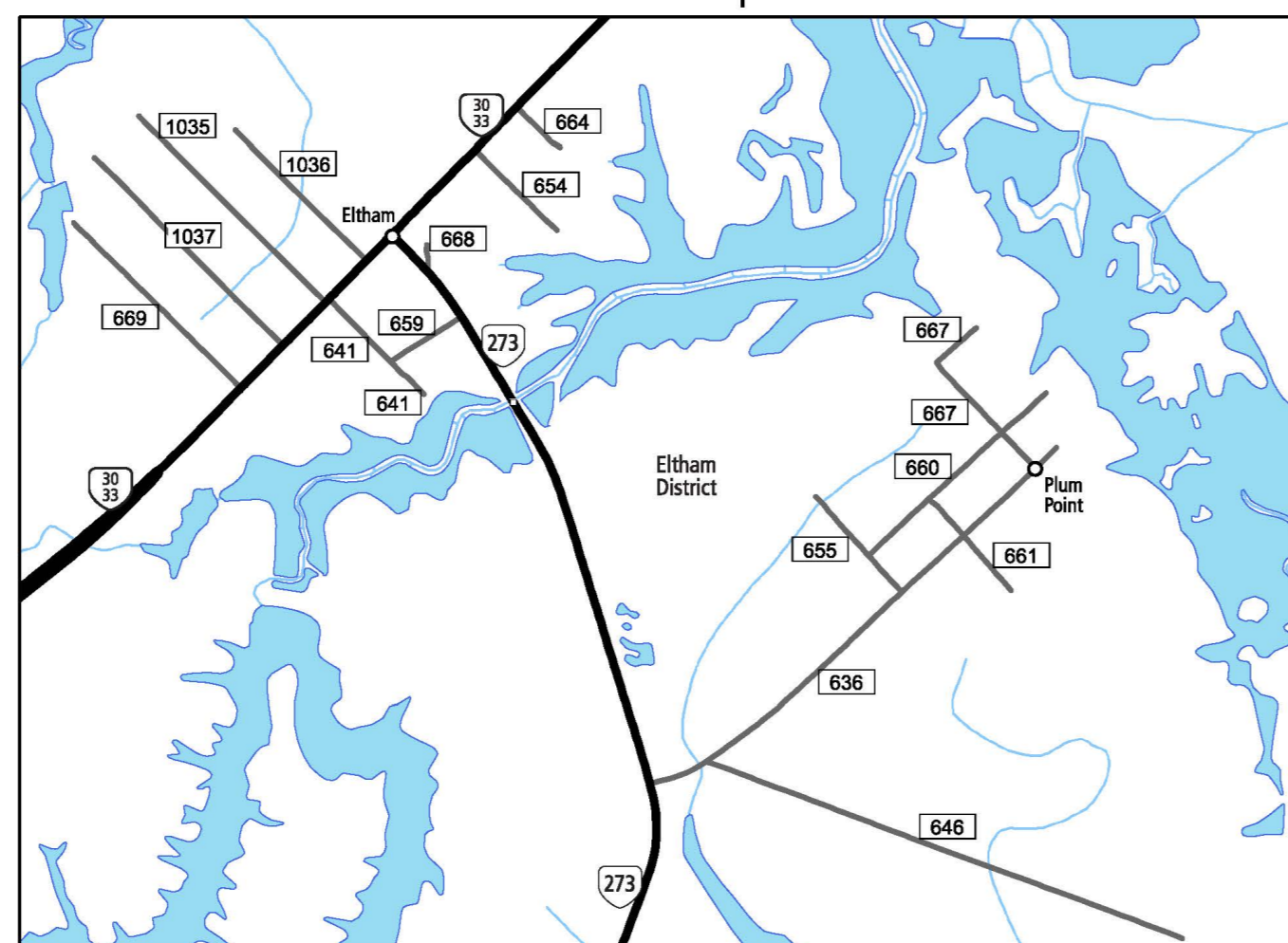
2
QUINTON AREA
four times map scale

TOTAL PRIMARY MILEAGE IN COUNTY 12/31/20: 67.65
SECONDARY MILEAGE TABULATION

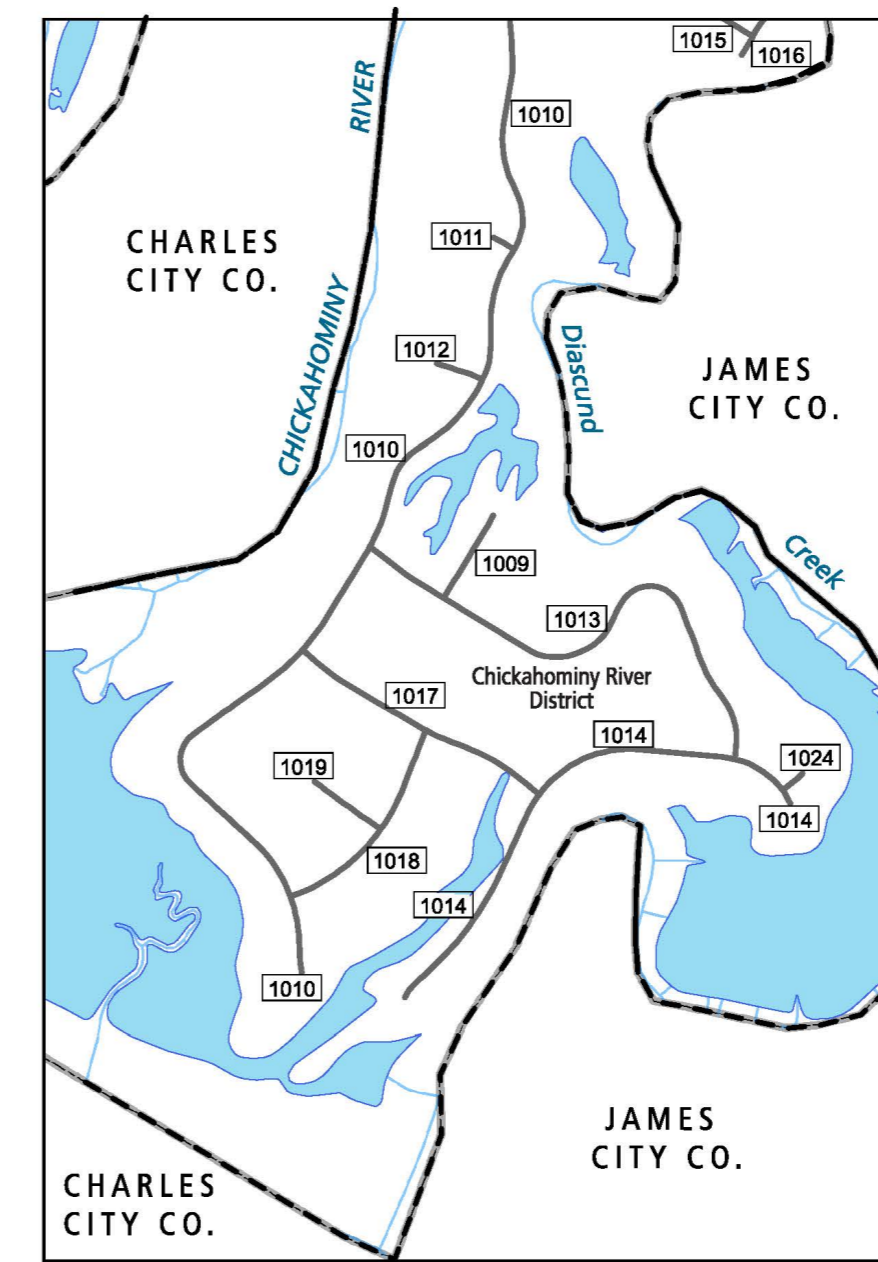
TYPE	7/1/1992	7/1/1994	7/1/1994	TYPE	12/31/1990	12/31/1990	12/31/1990	12/31/1990	12/31/1990	12/31/2000	12/31/2015	12/31/2020
BIT SUR. PAVED	0.00	0.00	4.94	HARD SURFACE	45.00	102.93	125.17	138.71	147.98	155.97	221.99	232.14
GRAVEL/SOIL ETC.	39.80	48.25	114.20	ALL WEATHER SURFACE	18.16	16.85	21.27	32.39	30.27	26.54	2.84	0
GRADED & DRAINED	67.20	101.55	21.40	LIGHT SURFACE	100.61	52.57	31.65	14.51	14.51	14.51	1.96	0
UNIMPROVED	49.30	7.05	10.47	UNSURFACED	2.70	2.30	1.50	0.13	0.00	0.00	0.00	3.48
TOTAL MILEAGE	155.30	156.85	150.41	TOTAL MILEAGE	166.47	174.65	179.59	183.74	192.76	197.02	228.61	235.62



7
ELTHAM AND PLUM POINT AREA
four times map scale



3 - PROVIDENCE FORGE AREA
four times map scale



6 - DIASCUND CREEK AREA
four times map scale

NEW KENT COUNTY, VA

COUNTY ROAD MAP

NEW KENT COUNTY

ROAD CLASSIFICATIONS

- Frontage Road
- Secondary Route
- State Route
- U.S. Route
- Urban Road
- LightSurface
- DividedHwy/Interstate
- AllWeatherSurface
- Unsurfaced
- otherSurface
- BikeRoutes
- AppalachianTrail
- Scenic Roads

MISCELLANEOUS

- Schools
- Seaports
- Park_Ride/Lots

AIRPORTS

- Commercial
- General
- Military

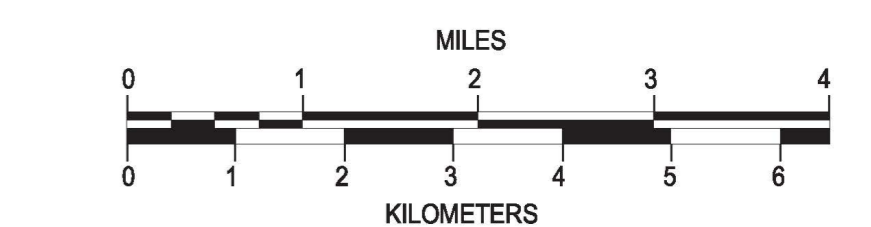
RAILROADS

- Metro
- VARailroads
- Park_N_Ride

BOUNDARIES

- MilitaryAreas
- MagisterialDistricts
- Incorp_Areas
- Natural_LandCover

Additional ROAD CLASSIFICATION (Post 2019)
Hard-surface



The accuracy or completeness of this map is not guaranteed or warranted. Map depicts state-maintained highway network as of May 1, 2021. Copyright © 2021 by Commonwealth of Virginia Department of Transportation, All Rights Reserved

AN INVENTORY OF STATE MAINTAINED ROADS