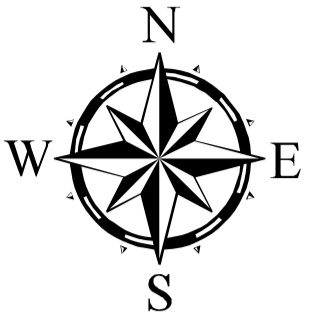
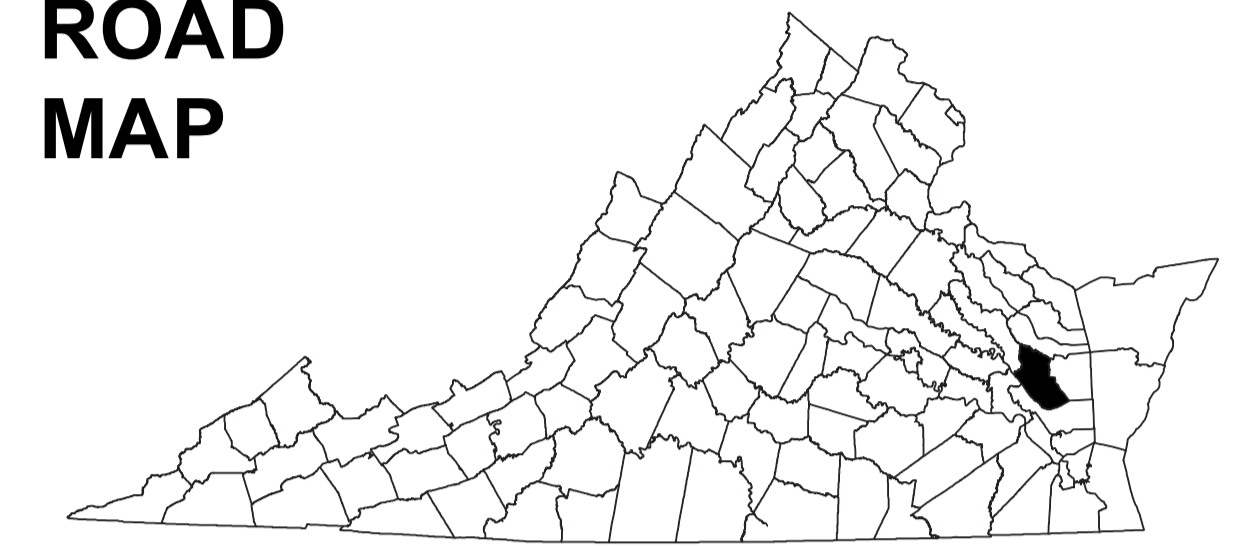


GLOUCESTER COUNTY, VA



COUNTY ROAD MAP



GLOUCESTER COUNTY

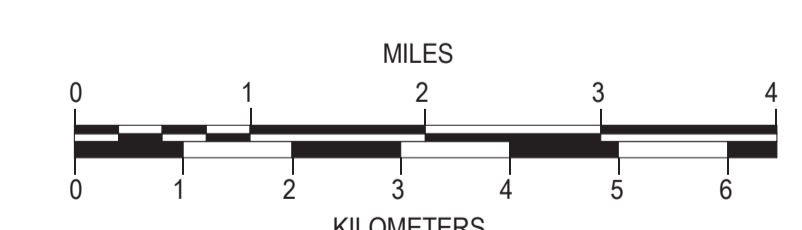
ROAD CLASSIFICATIONS

- Frontage Road
- Secondary Route
- State Route
- U.S. Route
- Urban Road
- LightSurface
- DividedHwyInterstate
- AllWeatherSurface
- Unsurfaced
- otherSurface
- BikeRoutes
- AppalachianTrail
- Scenic Roads

MISCELLANEOUS

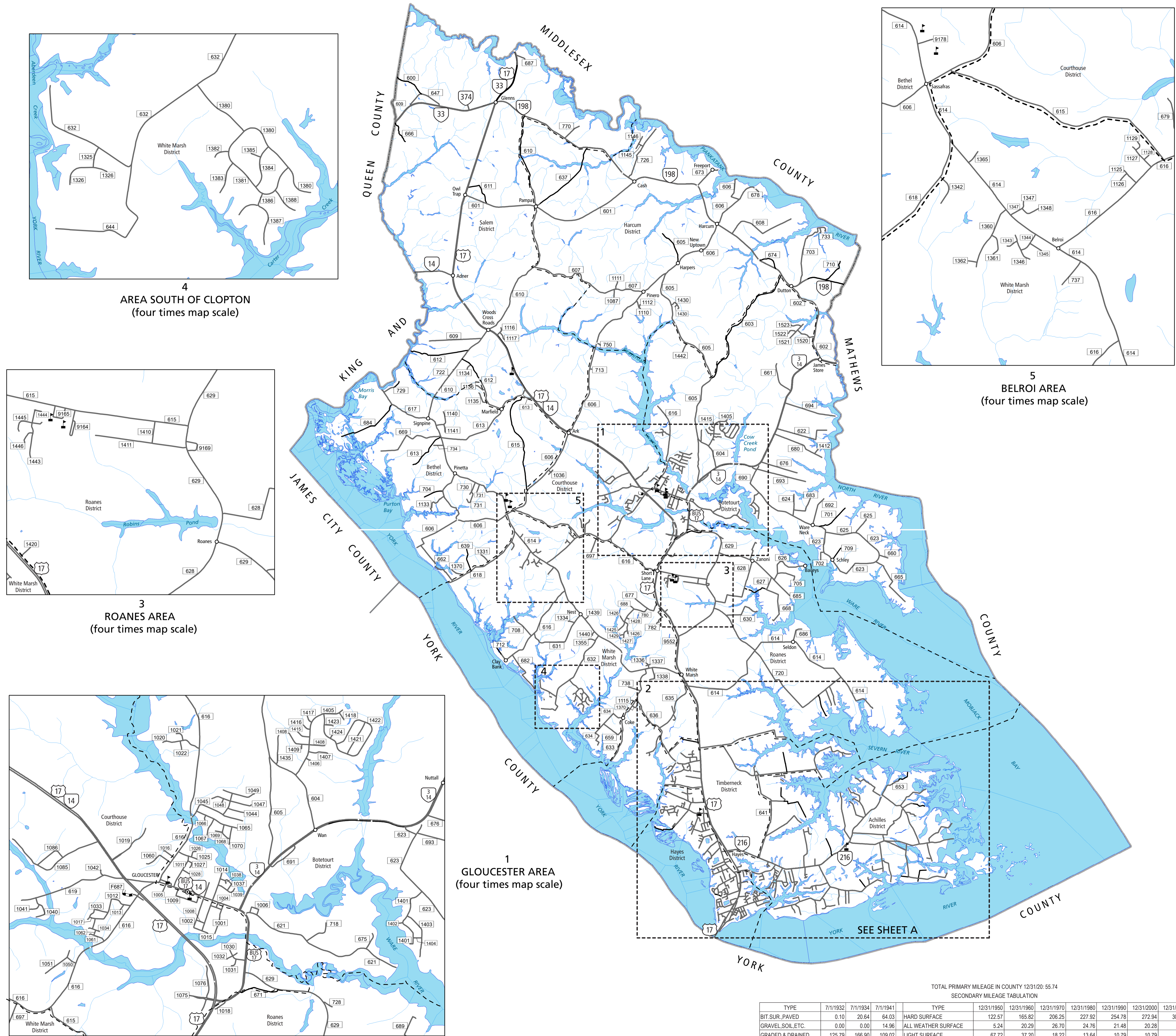
- Schools
- Seaports
- Park\_RideLots
- AIRPORTS**
- Commercial
- General
- Military
- RAILROADS**
- Metro
- VARailroads
- Park\_N\_Ride
- BOUNDARIES**
- MilitaryAreas
- MagisterialDistricts
- Incorp\_Areas
- Natural\_LandCover

Additional ROAD CLASSIFICATION (Post 2019)  
Hard-surface



The accuracy or completeness of this map is not guaranteed or warranted. Map depicts state-maintained highway network as of May 1, 2021. Copyright © 2021 by Commonwealth of Virginia Department of Transportation, All Rights Reserved

AN INVENTORY OF STATE MAINTAINED ROADS



TOTAL PRIMARY MILEAGE IN COUNTY 12/31/20: 55.74  
SECONDARY MILEAGE TABULATION

TYPE	7/1/1932	7/1/1934	7/1/1941	TYPE	12/31/1950	12/31/1960	12/31/1970	12/31/1980	12/31/1990	12/31/2000	12/31/2015	12/31/2020
BIT_SUR_PAVED	0.10	20.64	64.03	HARD SURFACE	122.57	165.82	206.25	227.92	254.78	272.94	305.91	316.08
GRAVEL_SOIL_ETC.	0.00	0.00	14.96	ALL WEATHER SURFACE	5.24	20.29	26.70	24.76	21.48	20.28	6.98	0.00
GRADED & DRAINED	125.79	166.90	109.02	LIGHT SURFACE	67.72	37.20	18.22	13.64	10.79	10.79	5.19	0.00
UNIMPROVED	69.16	6.70	9.56	UNSURFACED	20.84	2.18	2.28	2.78	0.00	0.00	0.00	5.15
<b>TOTAL MILEAGE</b>	<b>195.05</b>	<b>194.24</b>	<b>197.57</b>	<b>TOTAL MILEAGE</b>	<b>216.37</b>	<b>225.49</b>	<b>253.45</b>	<b>269.10</b>	<b>287.05</b>	<b>304.01</b>	<b>318.11</b>	<b>321.23</b>